

## PERMANENT CHUCK

This chuck is the successor of the popular Permag "P". The steel base and the pole plate design ensures the high rigidity and stability of the magnet which is a requirement for maximum accuracy in grinding. To clamp a workpiece, it utilizes the magnetic flow from permanent neodymium magnets which prevent the chuck from heating internally. Permagrip can be clamped on to another magnetic chuck. The height of the steel base is therefore designed to prevent interference. It is a supremely mobile chuck that can be easily introduced into high-level workplaces.

### Construction:

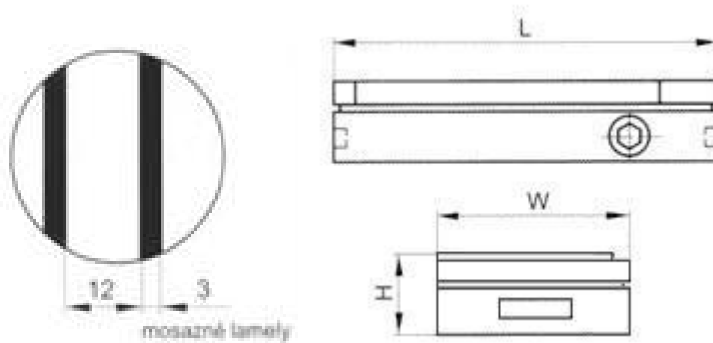
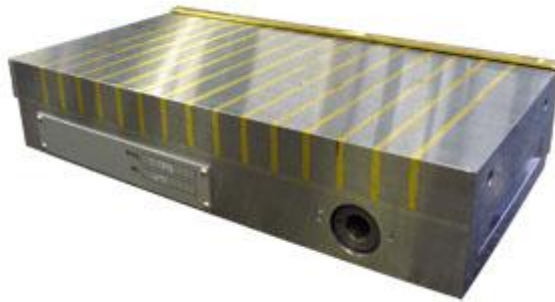
- Magnetic system with permanent neodymium magnets
- Pole plate with transversal poling, pole pitch 15 mm (12 mm steel and 3 mm brass)
- Rigid and stable construction
- Waterproof design

### Usage:

- Grinding of medium and larger components
- Dry grinding and grinding with cooling liquid

### Accessories:

- Stop-bars
- Set of clamps
- Switching lever



<b>Code</b>	<b>L (mm)</b>	<b>W (mm)</b>	<b>H (mm)</b>	<b>Weight (kg)</b>
<b>15102093</b>	205	100	49	7
<b>15132693</b>	260	130	49	9
<b>15153093</b>	300	150	49	14
<b>15135393</b>	355	150	49	15
<b>15205493</b>	450	200	51	32
<b>15206093</b>	600	200	51	38